

For All BMS SCOOTERS 150cc Gy6

TRANSMISSION COMPONENTS

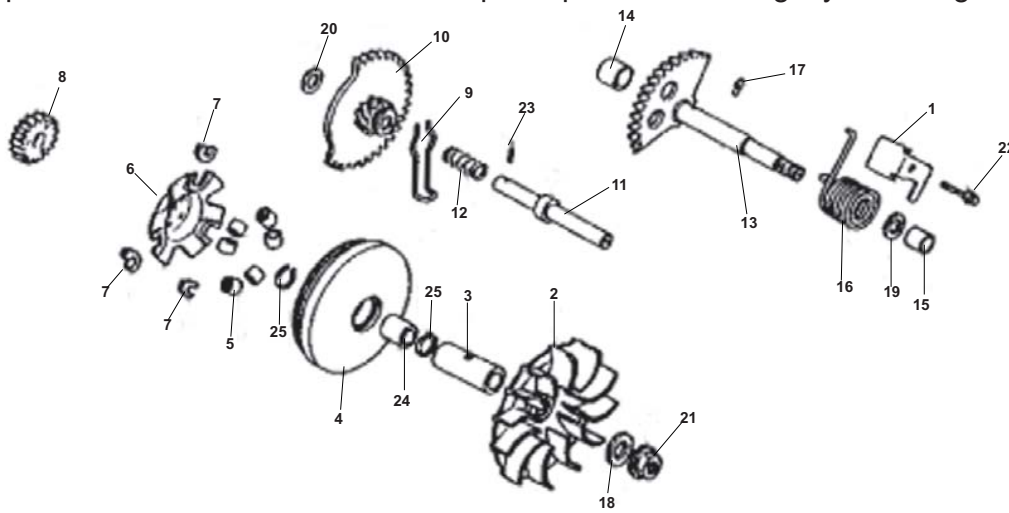
STARTING MECHANISM INSPECTION AND SERVICING

The starting mechanism can be divided into two types: kick starting and electric starting.

KICK RETURN STARTING MECHANISM

SPIRAL SPLINE TRANSFERRING STYLE STARTING MECHANISM

The picture shows the structure of the spiral spline transferring style starting mechanism.



- | | |
|---------------------------------------|-------------------------|
| 1. Kick starter spring stopping plate | 14. Bush |
| 2. Drive face | 15. Spindle bush |
| 3. Drive face boss | 16. Kick starter spring |
| 4. Movable drive face comp. | 17. Special pin |
| 5. Weight roller set | 18. Washer |
| 6. Ramp plate | 19. Washer |
| 7. Slide piece | 20. Washer |
| 8. Starting driver pulley | 21. Nut |
| 9. Starter gear friction spring | 22. Bolt |
| 10. Starter idle gear comp. | 23. Roller |
| 11. Starter idle shaft | 24. Face drive collar |
| 12. Starter idle spring | 25. Clip |
| 13. Kick starter spindle comp. | |

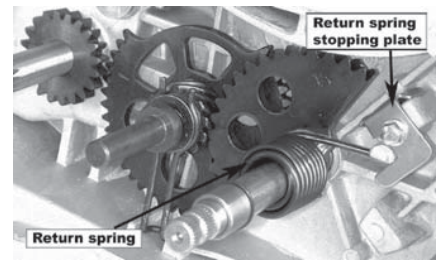
SPIRAL SPLINE TRANSFERRING STYLE STARTING MECHANISM REMOVAL

- Remove the left crankcase cover.
- Remove the crankcase gasket and dowel pins.
- Remove the movable driving plate (the whole set).
- Remove the starting spindle washer.



For All BMS SCOOTERS 150cc Gy6

- Remove the return spring stopping plate, and remove the return spring.
- Remove the whole starting lever set.
- Remove the starting idle shaft.



- Disassemble the starting spindle.

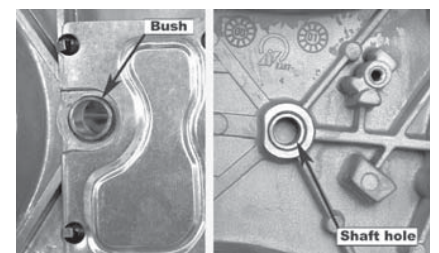


- Disassemble the starting idle shaft.



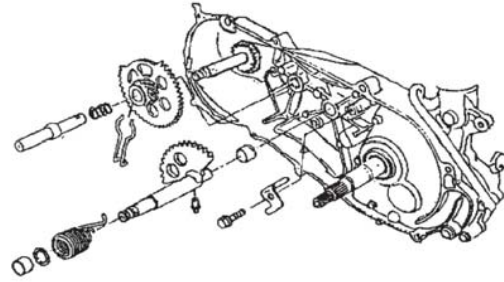
SPIRAL SPLINE TRANSFERRING STYLE STARTING MECHANISM INSPECTION

- Inspect the starting spindle for abrasion or other damage.
- Inspect the starting idle shaft for abrasion or other damage.
- Inspect the starting spindle bushing and the starting idle shaft hole for abrasion or other damage.



For All BMS SCOOTERS 150cc Gy6

SPIRAL SPLINE



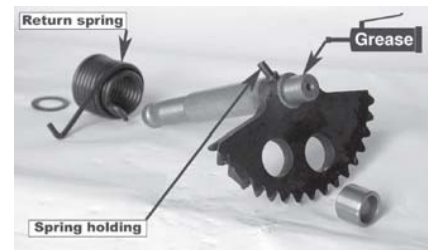
TRANSFERRING STYLE STARTING MECHANISM INSTALLATION

Install according to the pictures .

- Assemble the starting idle shaft set. Before assembling, apply a little grease on the bore of the idle shaft.

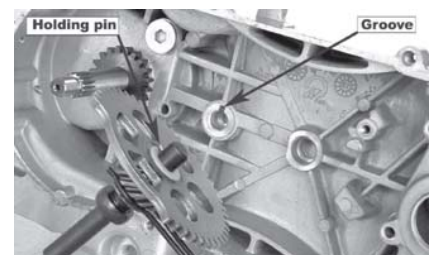


- Assemble the starting spindle, the return spring and the spring holding pin. A little grease should be applied on the starting spindle where it is under stress .



- Align the idle shaft holding pin with the groove of the crankcase then insert.

Before installing, apply a little grease on the groove of the rotary retaining spring on the idle shaft. The rotary retaining spring should be aligned with the specific groove of the crankcase to install.



- Align the scribing mark of the starting spindle with the punching mark of the idle shaft then mount the starting spindle.
- Hook on the two ends of the return spring.
- Install the return spring stopping plate.



- Install the crankcase dowel pin and gasket.
- Install the driven belt and the driving plate.
- Install the left crankcase cover and lock tightly.
- Install the starting pedal.

